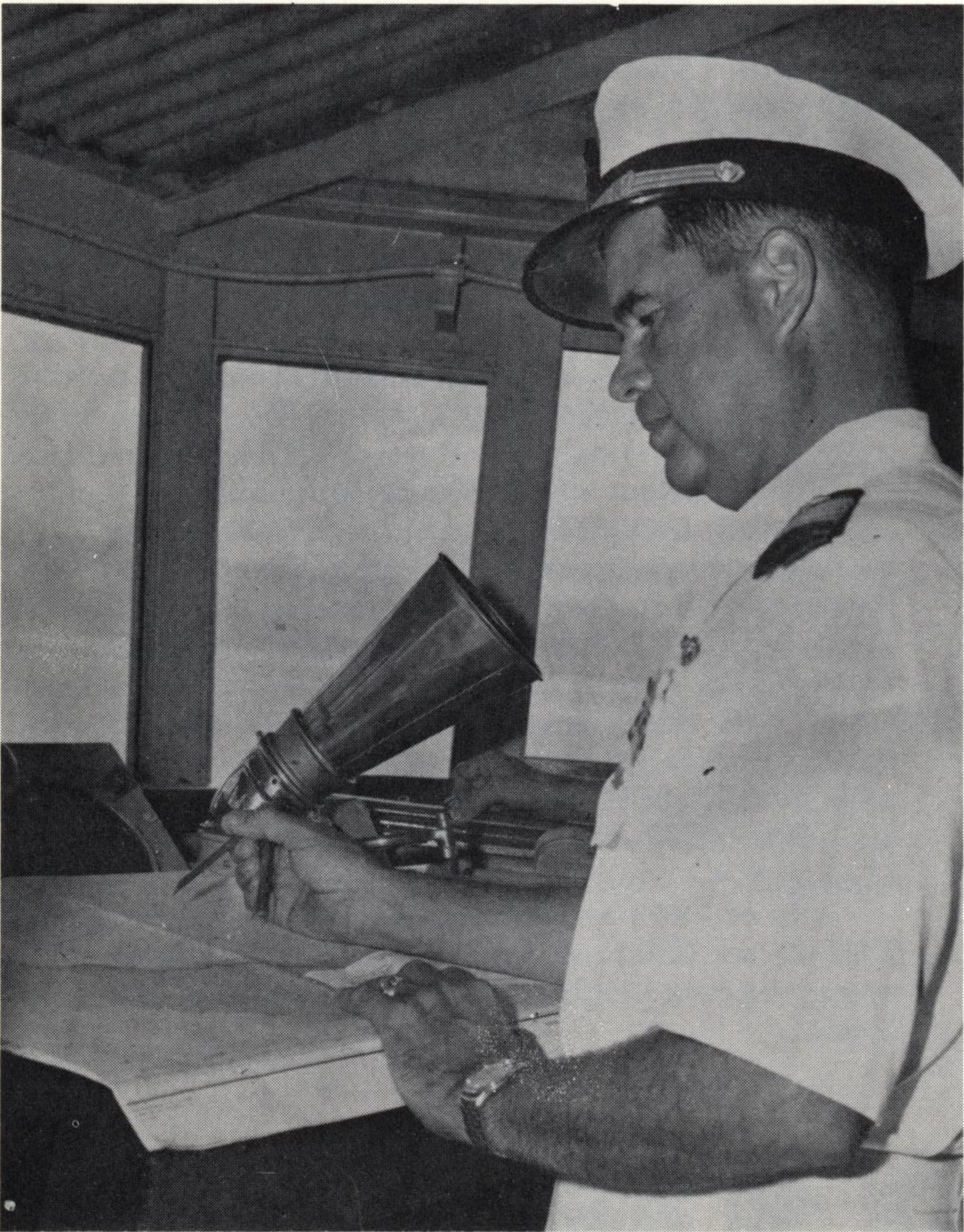


Commanding



CAPT. R. W. PAINE, JR.

Oct. 1962



Captain Roger W. Paine, Jr., was born August 13, 1917 in Austin, Texas, and was appointed to the U.S. Naval Academy, Annapolis, Maryland, in June 1935. On graduation in June 1939 he served two years in the Battleship Arizona, and then joined the Submarine Service in which he served for a period of six years in the Submarines S-34, Pompano, Wahoo, Whale, Tinoso, and Cubera. He served as Commanding Officer of the Submarines S-34, Whale and Cubera, made eight successful war patrols in the Pacific during World War II, and was awarded the Silver Star Medal, two Bronze Star Medals, a Commendation Ribbon and Pendant, and the Presidential Unit Citation. He participated in the sinking of 1 Destroyer, 1 Submarine, 1 Seaplane Tender, 1 Tanker, 3 Transports and 12 Freighters. After World War II he was ordered to the Massachusetts Institute of Technology for post-graduate work in Nuclear Physics, and graduated from M.I.T. in 1949 with the degree of Master of Science in Nuclear Physics. From 1949 through 1951 he worked at the Los Alamos Scientific Laboratory, Los Alamos, New Mexico, doing design and development work on Nuclear Components. From this assignment he was ordered to command the Destroyer Cowell, which served in the Atlantic, Pacific, Mediterranean, and Indian Oceans, and seven months in the Korean War. Late in 1953 he was ordered to Washington, D.C. for duty as Chief, Analysis Branch, Armed Forces Special Weapons Project, where he supervised analysis and correlation of weapons effects data. In 1956 and 1957 he attended the Naval War College at Newport, Rhode Island, and in the summer of 1957 took command of Destroyer Division 282, consisting of the four Anti-Submarine Destroyers, Eaton, Bache, Beale and Murray. This Division participated in NATO maneuvers in Europe in the fall of 1957, and later formed a part of Anti-Submarine Group Alfa, a special group formed to develop and perfect Anti-Submarine Warfare. Late in 1958 Captain Paine reported to the Bureau of Ordnance, Washington, D.C. as head of the Missile Branch, Research Division. When the Bureau of Naval Weapons was formed in 1959, he became Director of the Missile Guidance and Airframe Division, with responsibility for research, development test and evaluation of the Navy's Eagle, Sidewinder, Sparrow, Talos, Tartar, Terrier, and Typhon Anti-Air Warfare Missiles.

In October 1961 he assumed command of Topeka.

Captain Paine and his wife, the former Isla R. Vaile of Fort Smith, Arkansas, have three children, Roger W. Paine, III, Isla Rea Paine, and Barbara Jean Paine. Captain Paine is the son of Rear Admiral Roger W. Paine, USN, (Retired), who resides in Annapolis, Maryland.

Captain Paine was detached from Topeka in October 1962.