

# M DIVISION

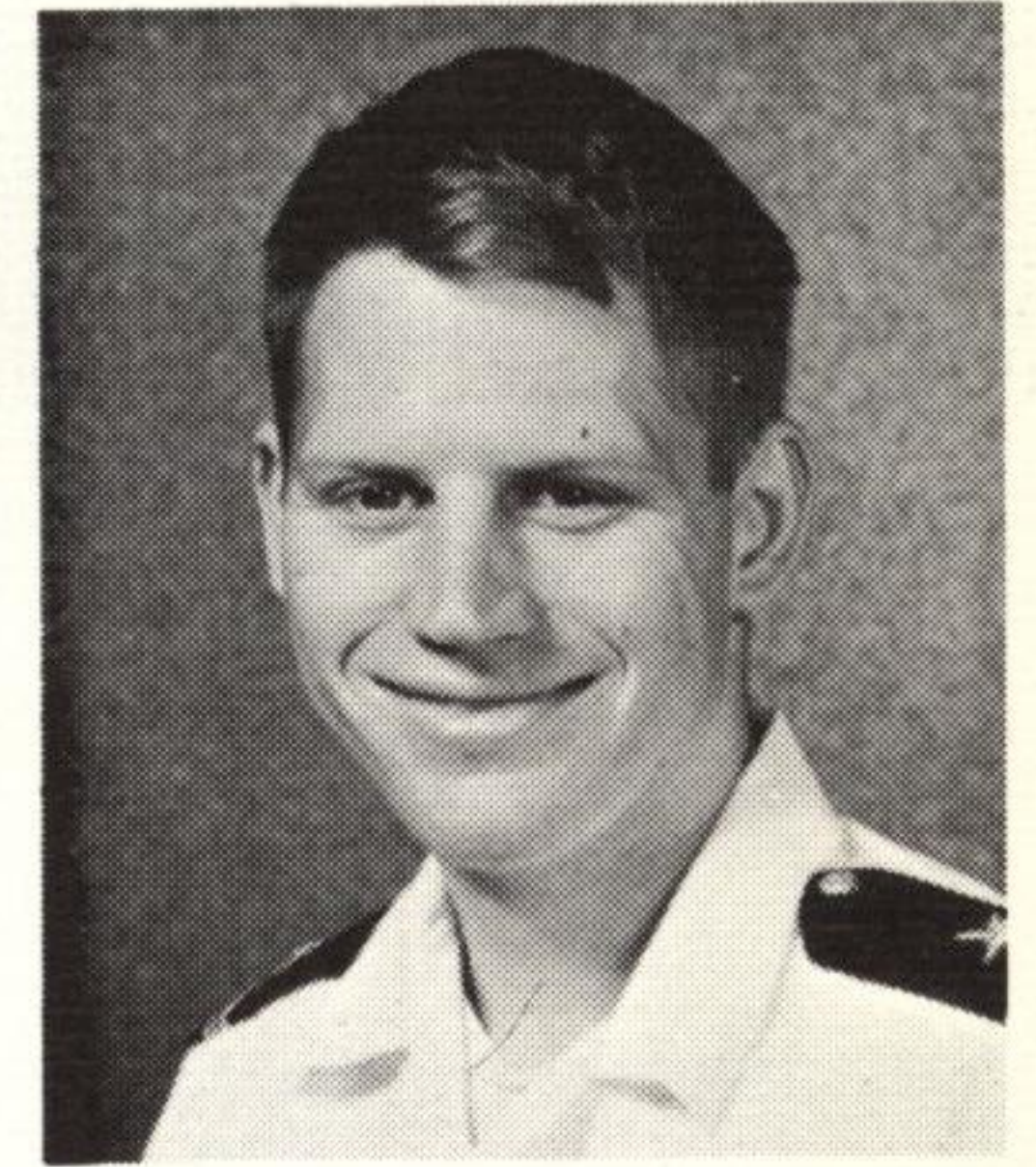


**LT Johnnie T. Barlow**  
Main Engines Officer

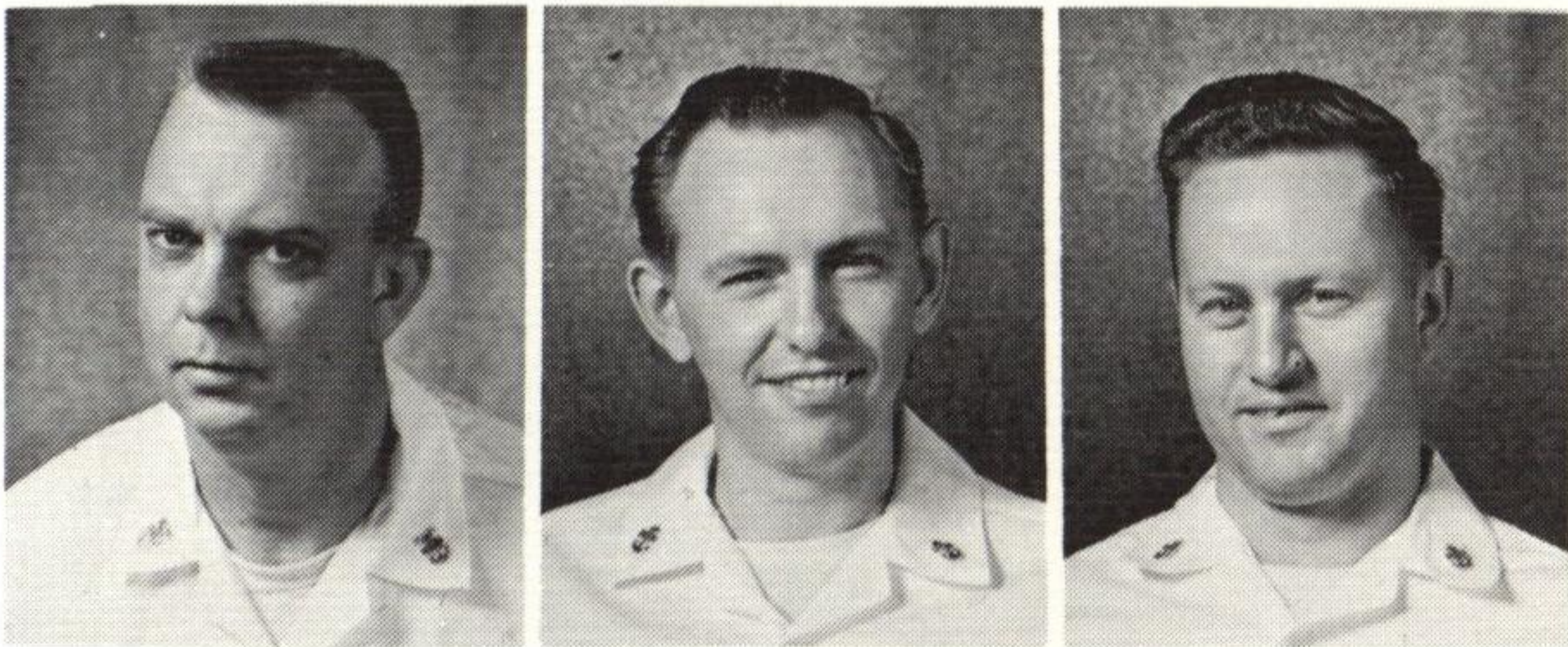
The Machinist's Mates of M-Division operate and maintain the ship's main engines, ship's service turbo-generators and distilling plants. In addition, they control associated equipment such as pumps, compressors, valves, oil purifiers, heat exchangers, governors, reduction gears, shafts and shaft bearings. The Machinist's Mate is constantly in the lime-light since his products comprise the vital energy used by the ship in her mission.



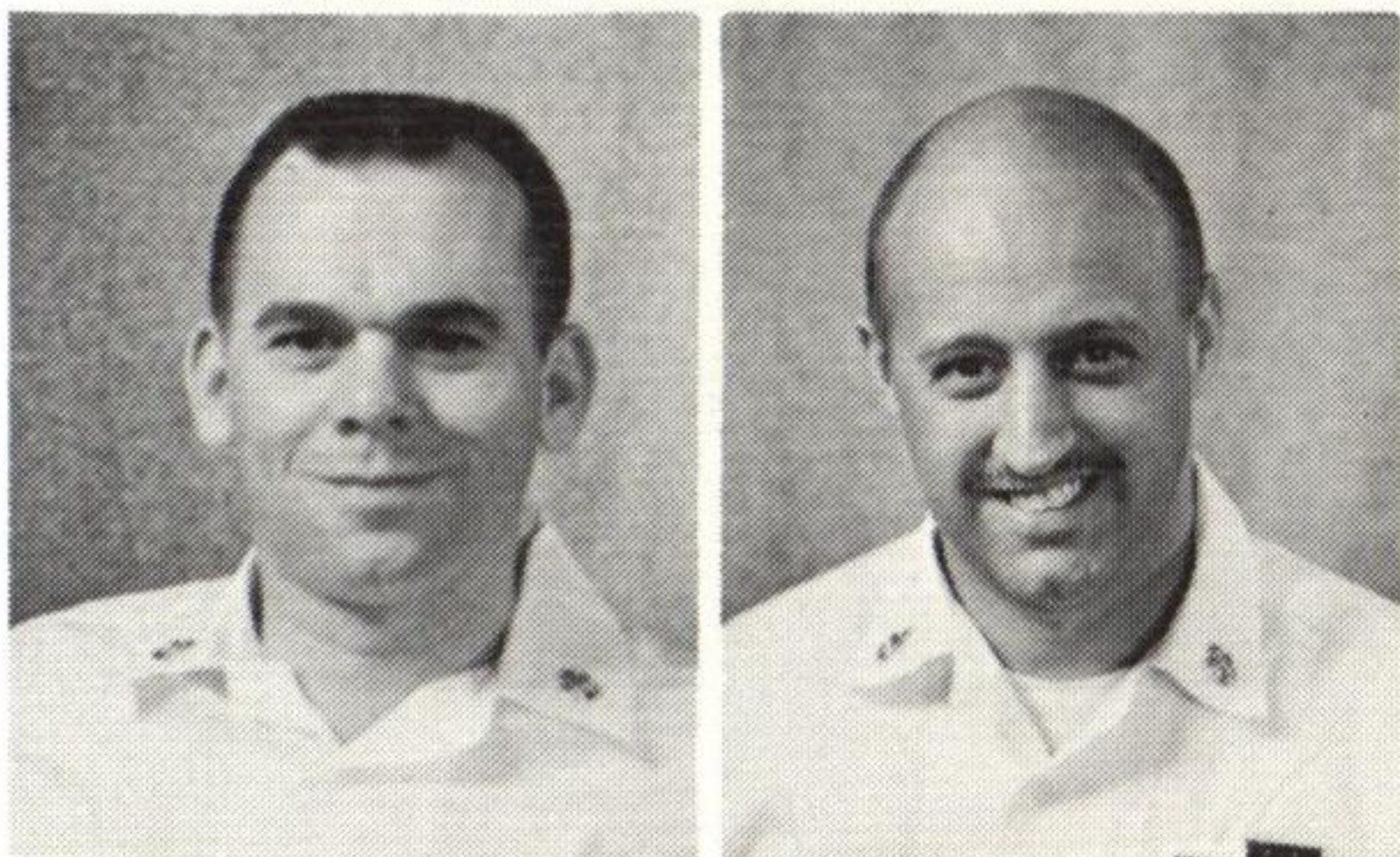
**LTJG William A. Espich**



**ENS Harry B. Brown**



**SPCM B. H. Phillips**  
**MMC E. H. Hildreth**  
**MMC H. H. Kliem**



**MMC B. B. Mounts**  
**MMC S. R. Seigel**

