

LCDR H. L. WEBSTER

USN

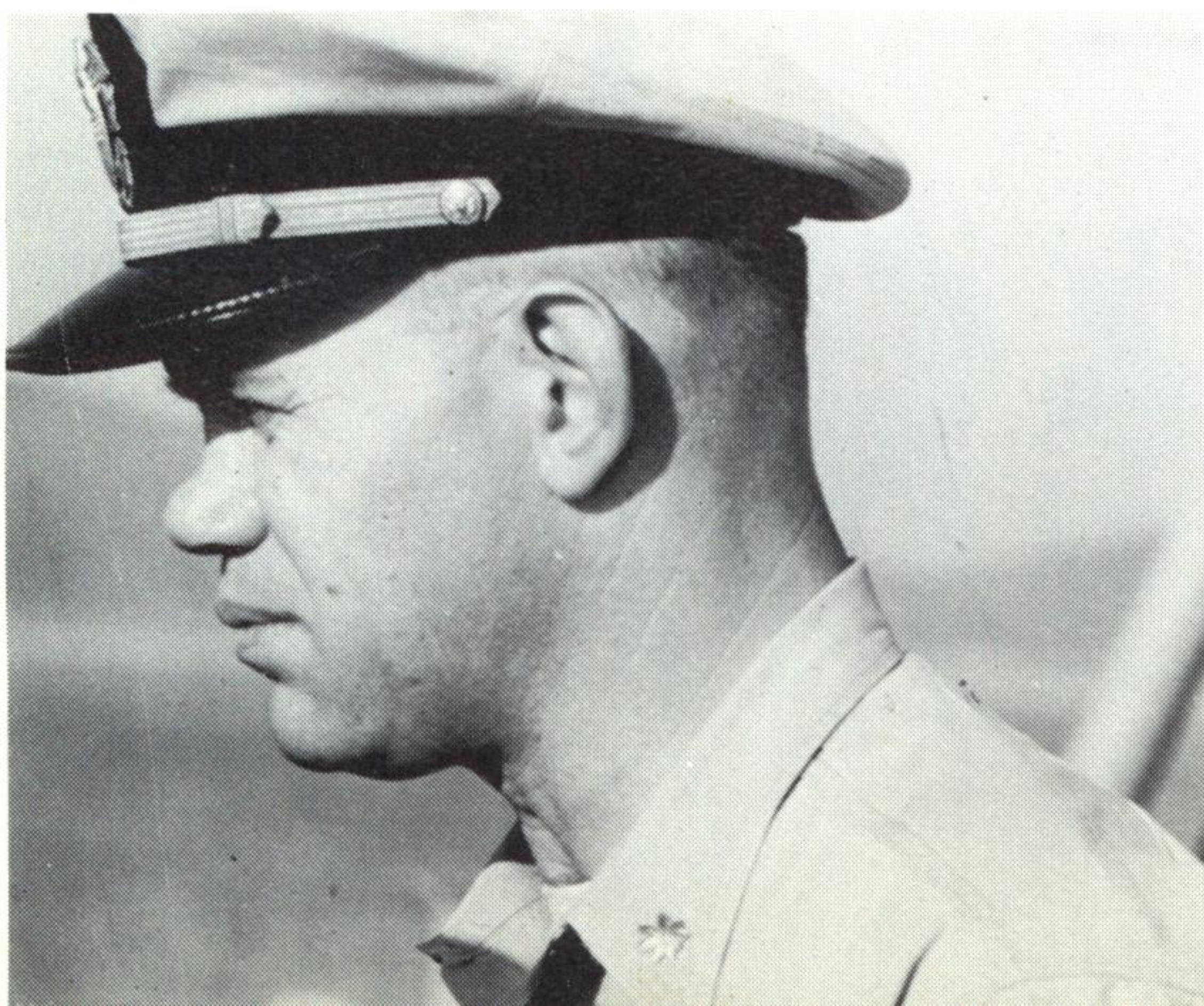
Executive Officer



From the Executive Officer:

A WESTPAC Cruise at first glance is the end of a significant page in the ship's history. However, looking a bit deeper, at the many different EDSON successes during the cruise, the common denominator in each case has been the outstanding spirit and attitude of the crew. During the forthcoming yard overhaul, there will be numerous personnel transfers with new personnel coming on board. But a "can do" spirit has been instilled on the ship during this cruise which I am sure will continue to grow. Therefore, our arrival in Long Beach will not be the end, but a continuation of this outstanding period in EDSON's history.

My appreciation and sincere gratitude to each of you, for your efforts can never be adequately expressed, yet your record stands for itself. I refer in particular to your exemplary conduct record in the many foreign ports visited, with which no other ship in the fleet can compare. Your co-operation generated in blood donations and charity funds is something you can always be proud of. Your fortitude and enthusiasm exhibited during combat operations proved you each to be true American fighting sailors. "When the going gets tough, the tough get going."



*H. L. Webster*