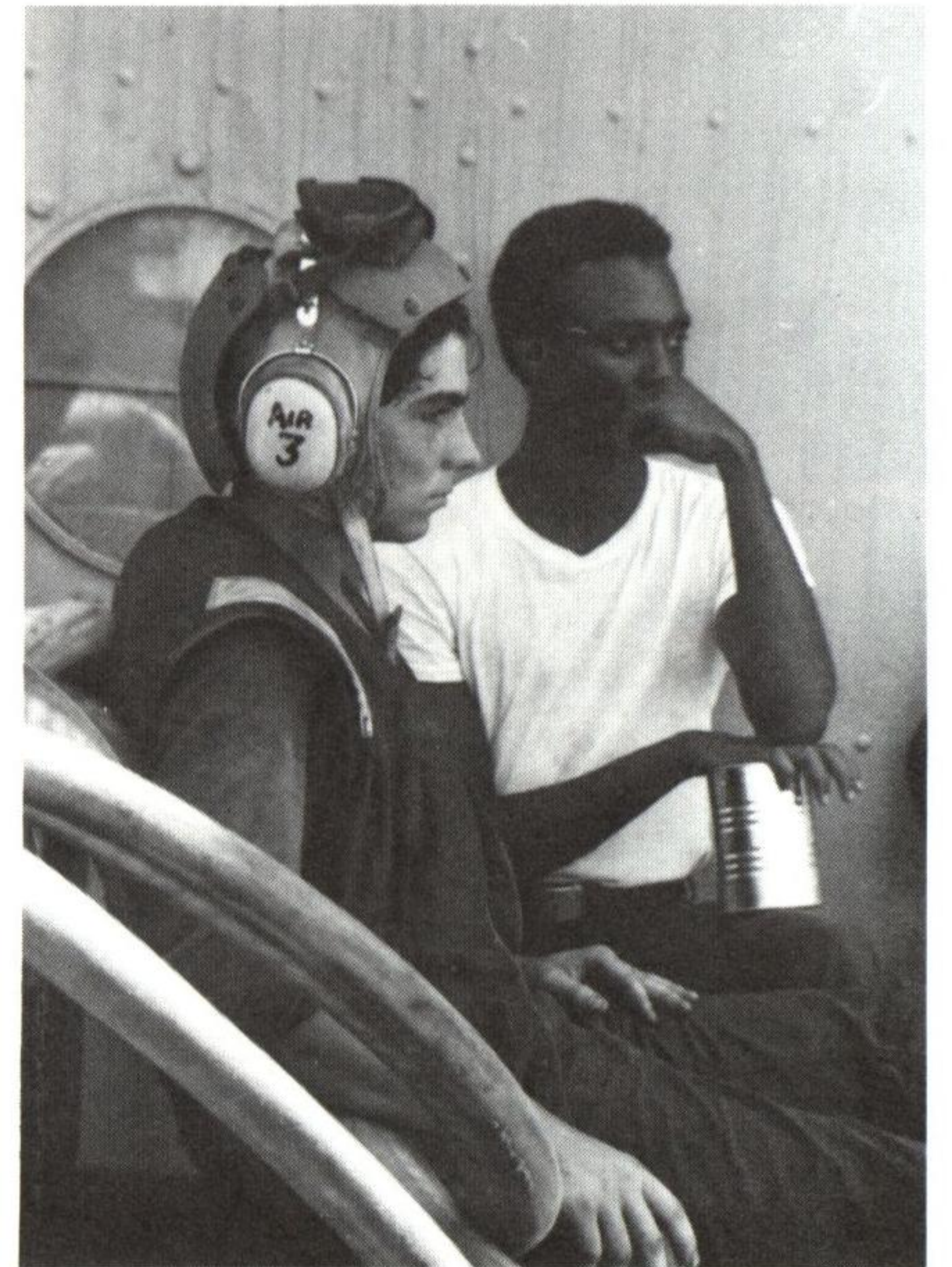




It was a quick trip back to Subic then on to Okinawa for a landing exercise (LAND-EX). From dawn to dusk hundreds of Marines invaded a place called Kim Red from the air and sea...a long day for the Denver but a successful one.



Kim Red's landing was not the only exercise we had but one of the largest. It included three of the other units of the squadron: Tarawa, Fort Fisher, and Barbour County.

